

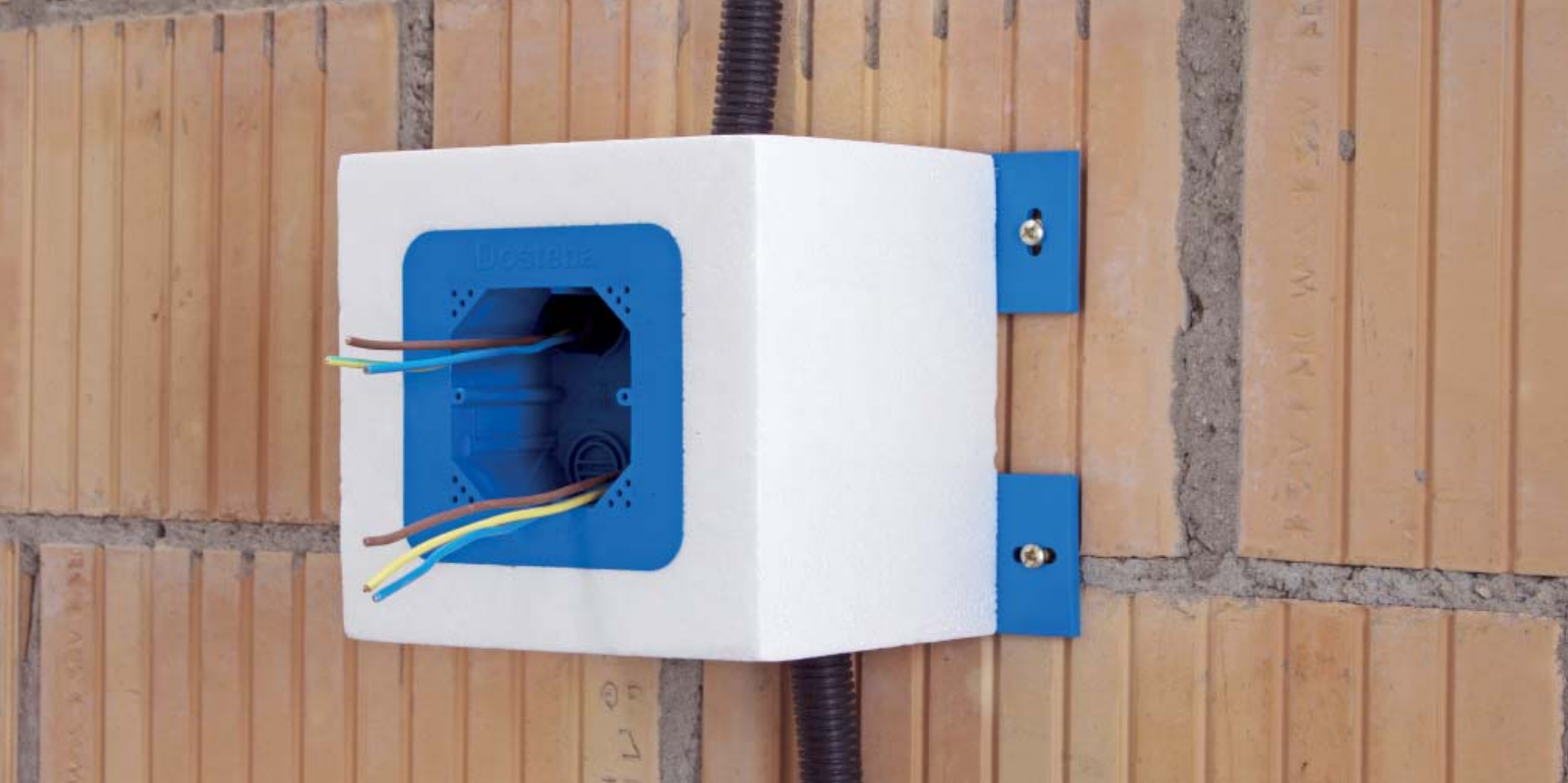
So that the electricity flows,
not the heat.

Electric recessed socket Eldoline®-EPS



Dosteba

*Elemente sind
Elements are
unsere Stärke
our strength*



Electric recessed socket Eldoline®-EPS

The problem

The installation of switches, sockets, lights and sensors in heat insulation bonding systems are potential vulnerabilities.

The solution

Electric recessed sockets Eldoline®-EPS are free of thermal bridges and guarantee a secure fastening of the electrical components. The insulation panels can be added accurately to the electric recessed socket Eldoline®-EPS. The cable or pipe bushings can be cleanly sealed with the rubber plugs supplied upon request.

Our quality

The electric recessed sockets Eldoline®-EPS can be installed with screw dowels without adhesives. Only the blind plugs must be removed from the EPS for the pipe bushing – no sawing or drilling is required.

Your advantages

- ✓ Simple and efficient assembly
- ✓ Simple attachment of the insulation boards
- ✓ No cavities – no thermal bridges
- ✓ No sawing or drilling required
- ✓ Available from stock in every insulation thickness 80 – 300 mm
- ✓ Tightness guaranteed by rubber plugs

The product

Electric recessed sockets Eldoline®-EPS consists of a socket and four feet made of flame-retardant plastic affixed to the EPS moulding. The cable or pipe leads are sealed with blind plugs made of EPS. Electric recessed sockets Eldoline®-EPS are available in three different versions.

Electric recessed socket Eldoline®-EPS
 - 150 x 150 mm, size 1
 - 210 x 150 mm, size 2 x 1
 - 250 x 150 mm, size 2 x 1 NUP

Insert equipment holder

- Size 1
- Size 2 x 1

Technical Data

Thicknesses D: 80 – 300 mm

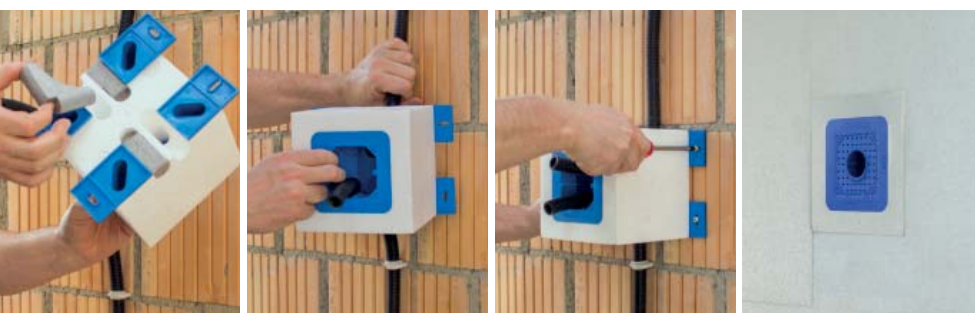
Volumetric weight EPS: 30 kg/m³

Thermal conductivity EPS:
 $\lambda = 0.031 \text{ W/mK}$

Fire resistance to IEC 60695-2

Polyamide:

glow-wire proven 850 °C



Dosteba AG

CH-8184 Bachenbülach

Phone: +41 43 277 66 00

Dosteba GmbH

D-72770 Reutlingen-Betzingen

Phone: +49 7121 30177 10